

M1 AutomationBridge Setup Guide

Revision 1.1

Introduction

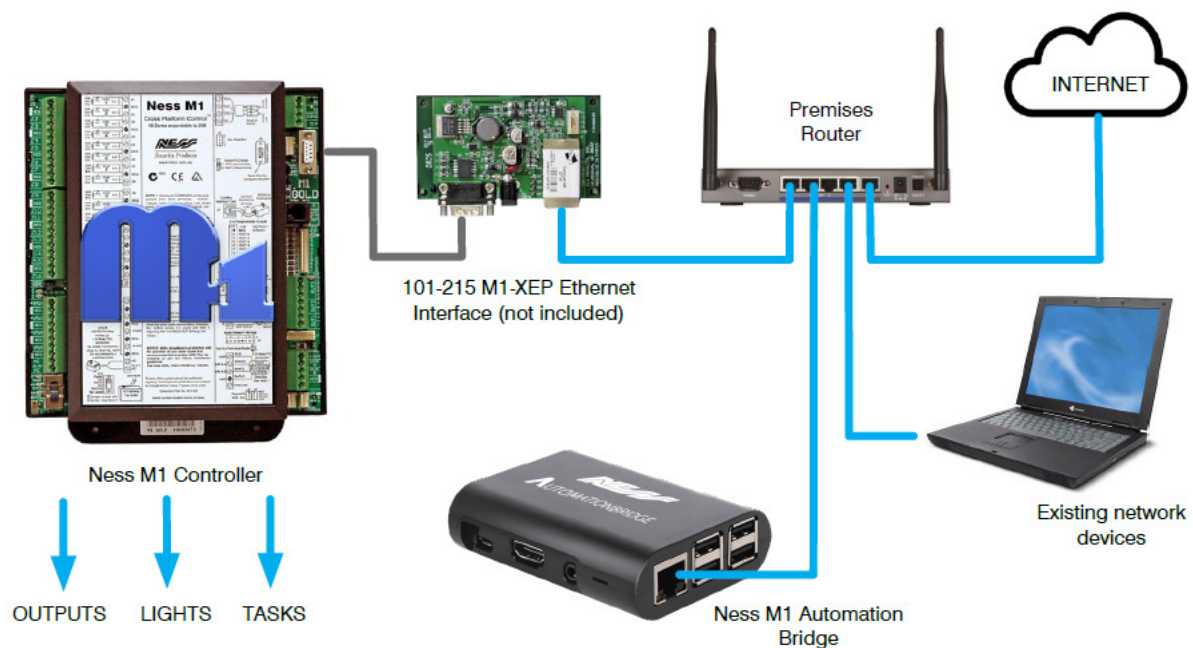
This tech note will step you through the steps in setting up the M1 AutomationBridge for the first time.

Hardware Required

- M1XEP (Ethernet Module) with M1XEP firmware 2.0.42 or above (101-215)
- Ness M1 AutomationBridge (101-296A)
- Computer
- WiFi Network
- Active Internet Connection
- Access to a Smart Speaker (Google Home, Amazon Echo or HomePod) or an iOS device or Android device.

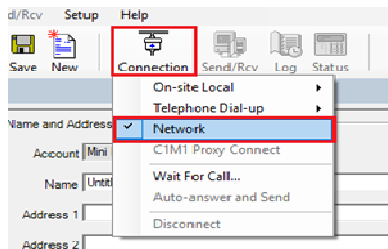
Note, Smart Speakers are not included with purchase of the M1 AutomationBridge.

Wiring Diagram

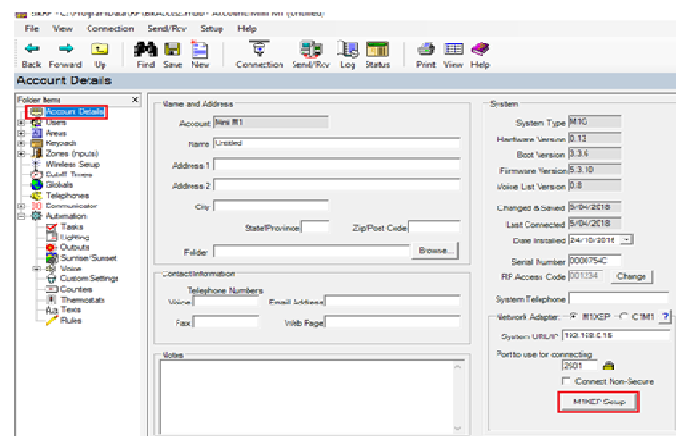


1.0 Setting up M1XEP

1. Before anything can be setup in the M1 AutomationBridge there is a few steps you need to check and setup in the M1XEP (Ethernet Module).
2. Open your M1 Account in ElkRP, and connect it to your panel via the M1XEP.



3. Once connected, from the 'Accounts details' page, click on the M1XEP setup button.



4. Select the 'TCP/IP Settings' tab and ensure you have the IP address set as a static IP address. Also ensure you have enabled the non-secure port. Keep note of both settings as you will need this for later on. If you make any changes, press the 'send' button at the bottom of the page to send the settings to the M1XEP.

M1XEP Setup

Introduction | **TCP/IP Settings** | Passwords | Email | Central Station | Dynamic DNS | Time Server | Audio System | M1Cloud

Device Name: Training Room M1 Used during the "Find" process to help identify M1XEPs if there are more than one on the same network.

If the M1XEP will be assigned an IP Address by a DHCP server, select "Assigned an IP address." To assign a fixed address, select "Use a static IP address." In most cases, it is acceptable to use DHCP which automatically does all the work of setting up the network ID, subnet mask, and gateway. However, if you decide to choose a static IP address, you will need to manually complete all these fields. Consult your IT professional or ISP for these details.

☐ Assigned an IP address via DHCP

☒ Use a static IP address:

IP Address: 192 . 168 . 0 . 251

Subnet Mask: 255 . 255 . 255 . 0

Default Gateway: 192 . 168 . 0 . 1

☒ Enable Non-Secure Port

2101

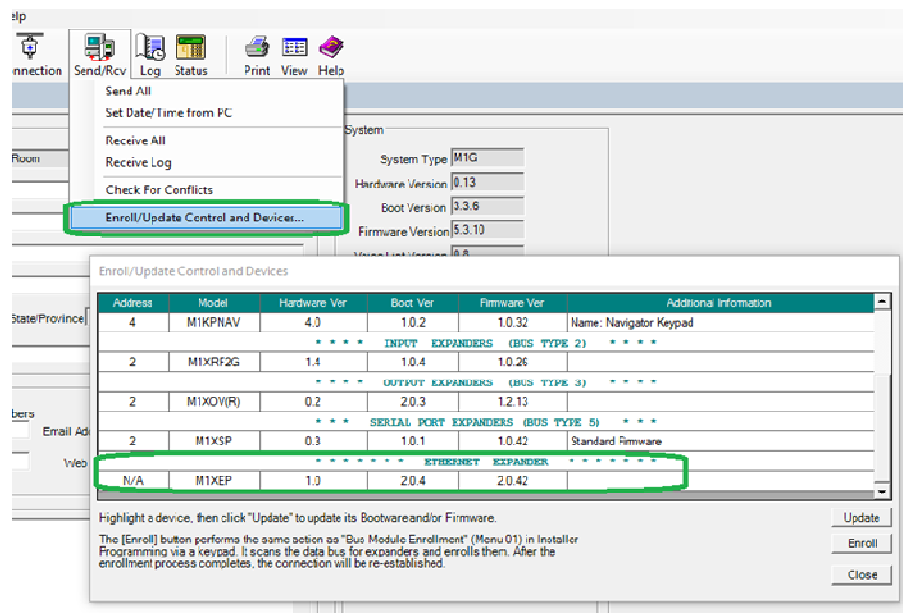
Secure Port: 2601

Enable Discovery of M1XEP for AMX and Control4 systems

Copy IP Address and Secure Port above to the Account Details Screen:

Auto-DNS available on M1XEP firmware ver 1.3.20 and later only. [Test DNS] works on ver 2.0.18 and later only.

5. Once the M1XEP settings have been confirmed and sent to your panel, close the M1XEP setup screen.
6. Ensure your M1XEP is running the firmware version 2.0.42 or above.



1.1 Setting up M1

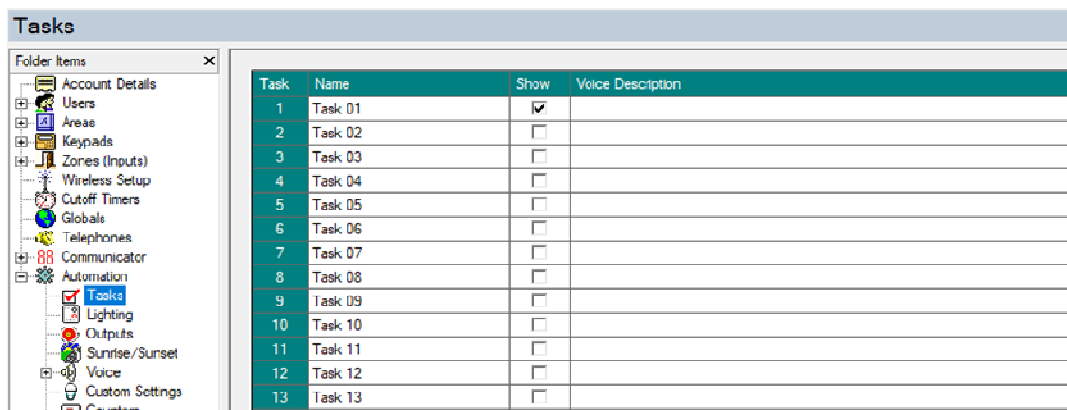
Before the AutomationBridge can find your devices on the M1, the M1 panel needs a few settings set first.

Tasks

Select 'Tasks' from the 'Automation' menu to view the Tasks in ElkRP.

A Task is like a macro and is used in the M1 Rules to trigger multiple events.

Only the Tasks that have a name and have the 'Show' box ticked will display and can be used in the Ness M1 AutomationBridge.



Task	Name	Show	Voice Description
1	Task 01	<input checked="" type="checkbox"/>	
2	Task 02	<input type="checkbox"/>	
3	Task 03	<input type="checkbox"/>	
4	Task 04	<input type="checkbox"/>	
5	Task 05	<input type="checkbox"/>	
6	Task 06	<input type="checkbox"/>	
7	Task 07	<input type="checkbox"/>	
8	Task 08	<input type="checkbox"/>	
9	Task 09	<input type="checkbox"/>	
10	Task 10	<input type="checkbox"/>	
11	Task 11	<input type="checkbox"/>	
12	Task 12	<input type="checkbox"/>	
13	Task 13	<input type="checkbox"/>	

Lights

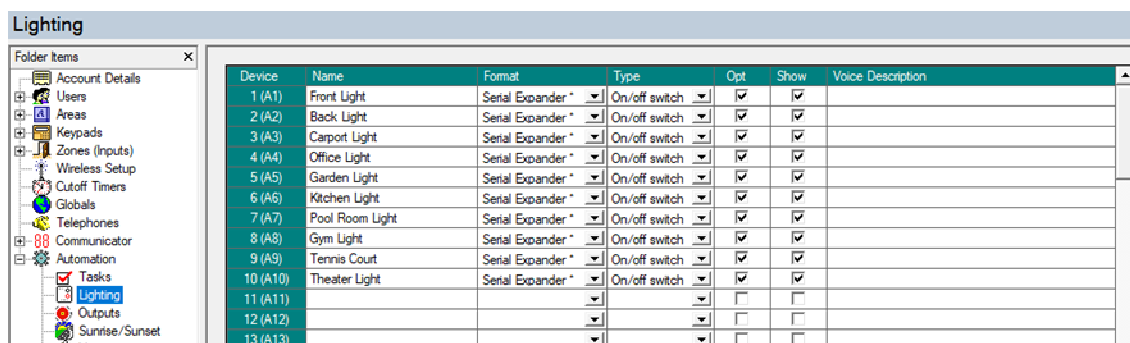
Name

All the lights you want to use in the M1 AutomationBridge needs to have a name.

Opt / Show Boxes

Tick both of these boxes for the lights that you want to use in the Ness M1 AutomationBridge.

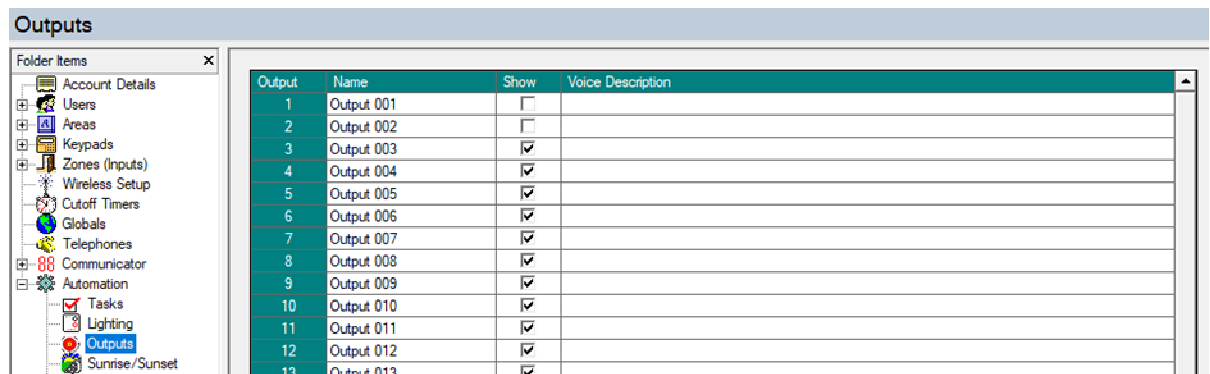
(Voice Description can be left blank)



Device	Name	Format	Type	Opt	Show	Voice Description
1 (A1)	Front Light	Serial Expander *	On/off switch	<input checked="" type="checkbox"/>	<input checked="" type="checkbox"/>	
2 (A2)	Back Light	Serial Expander *	On/off switch	<input checked="" type="checkbox"/>	<input checked="" type="checkbox"/>	
3 (A3)	Carport Light	Serial Expander *	On/off switch	<input checked="" type="checkbox"/>	<input checked="" type="checkbox"/>	
4 (A4)	Office Light	Serial Expander *	On/off switch	<input checked="" type="checkbox"/>	<input checked="" type="checkbox"/>	
5 (A5)	Garden Light	Serial Expander *	On/off switch	<input checked="" type="checkbox"/>	<input checked="" type="checkbox"/>	
6 (A6)	Kitchen Light	Serial Expander *	On/off switch	<input checked="" type="checkbox"/>	<input checked="" type="checkbox"/>	
7 (A7)	Pool Room Light	Serial Expander *	On/off switch	<input checked="" type="checkbox"/>	<input checked="" type="checkbox"/>	
8 (A8)	Gym Light	Serial Expander *	On/off switch	<input checked="" type="checkbox"/>	<input checked="" type="checkbox"/>	
9 (A9)	Tennis Court	Serial Expander *	On/off switch	<input checked="" type="checkbox"/>	<input checked="" type="checkbox"/>	
10 (A10)	Theater Light	Serial Expander *	On/off switch	<input checked="" type="checkbox"/>	<input checked="" type="checkbox"/>	
11 (A11)				<input type="checkbox"/>	<input type="checkbox"/>	
12 (A12)				<input type="checkbox"/>	<input type="checkbox"/>	
13 (A13)				<input type="checkbox"/>	<input type="checkbox"/>	

Outputs

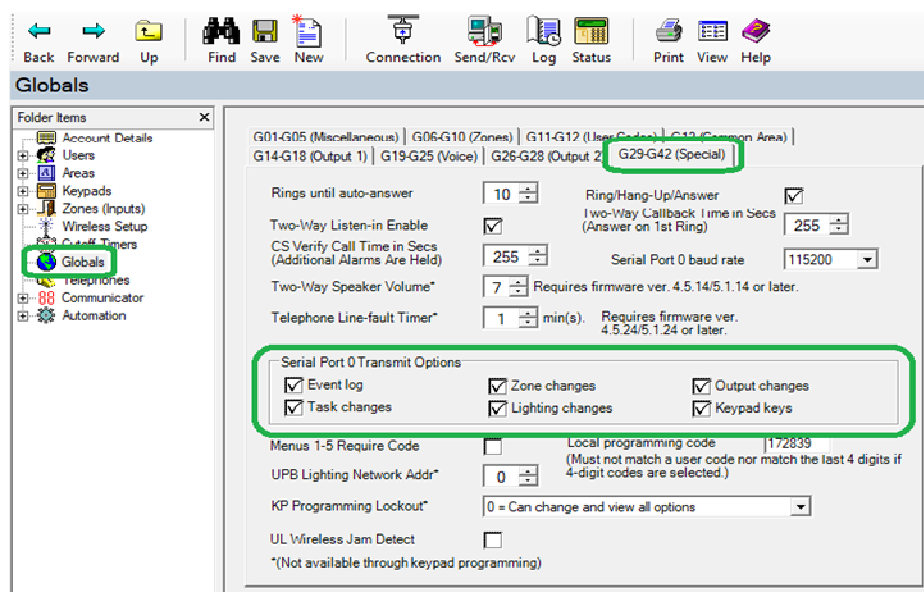
Give an output a name that you want to use with the Ness M1 AutomationBridge. Ensure that the show tick box is ticked, else the output will not show.



Globals

Make sure all 'Serial Port 0 transmit' is ticked under the Globals 'G29-G42 Special tab'.

Without these ticked the Ness M1 AutomationBridge won't know the status of the device.

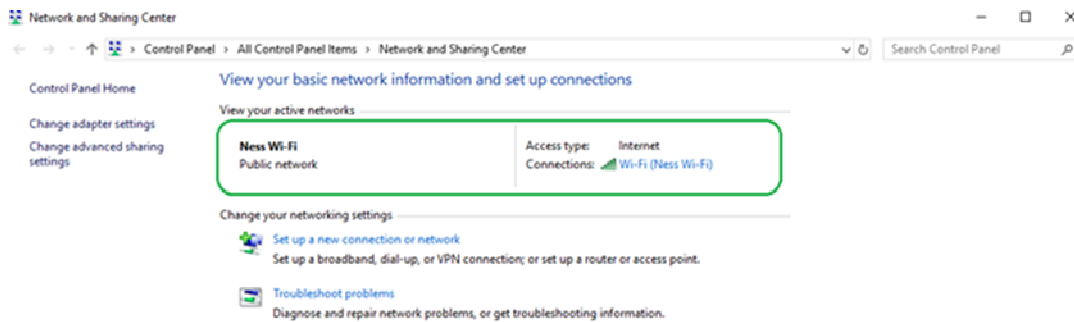


Make sure you are disconnected from ElkRP once everything is setup.

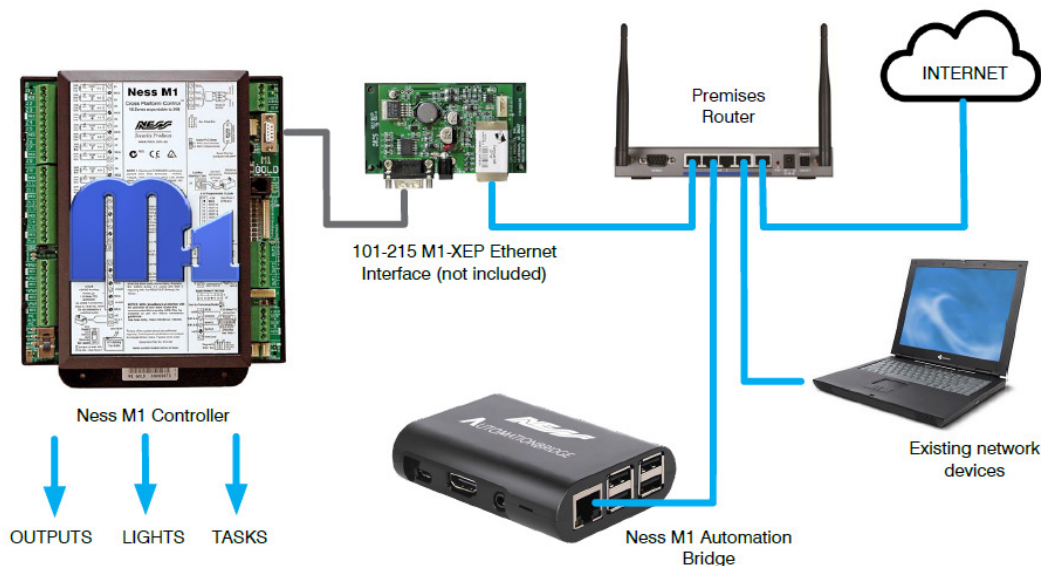
You will need to wait approx 1-2 minutes after disconnecting from ElkRP.

1.2 Setting up the Ness M1 AutomationBridge

Make sure you have only 1 network adaptor enabled and connected on your computer.

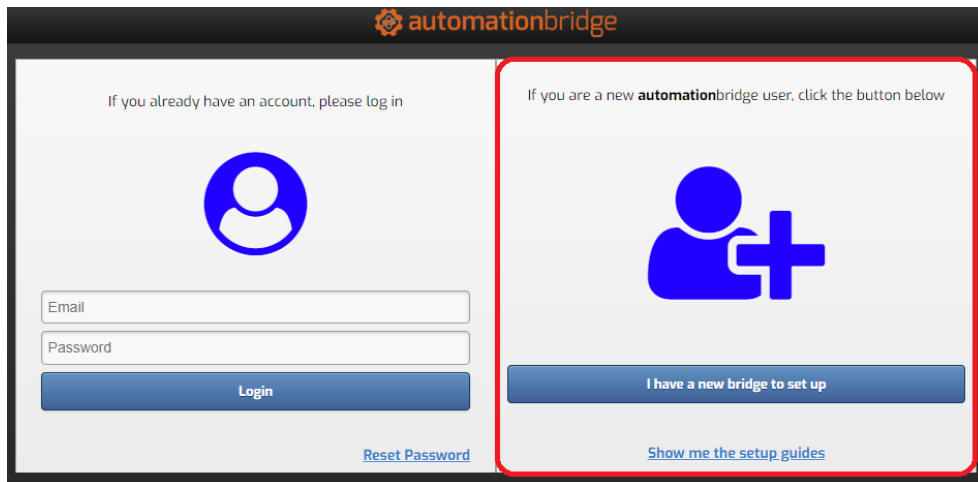


Plug in the M1 AutomationBridge into the network. This may take up to 3-4 minutes to fully power up.



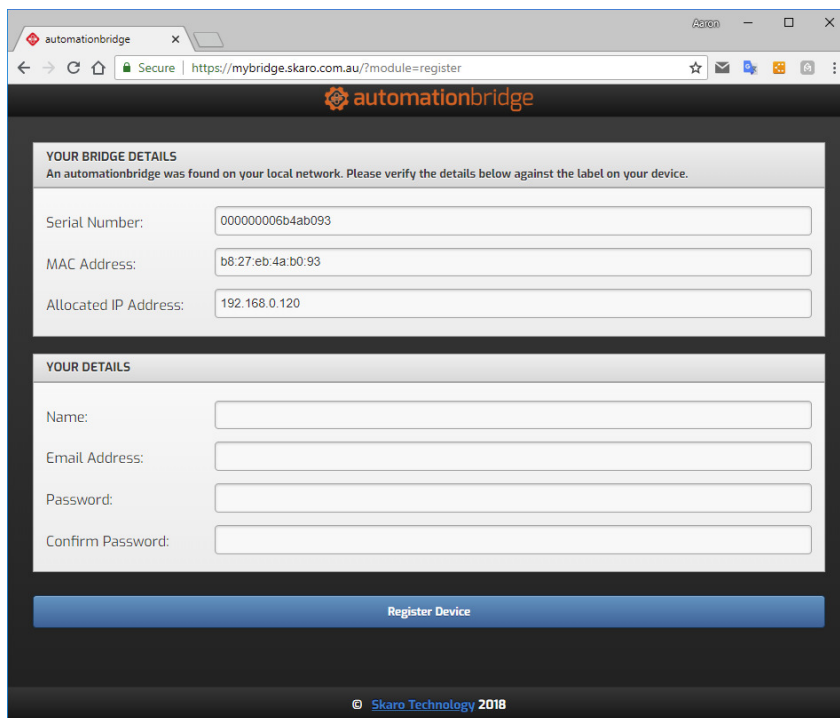
Open a web browser (recommend Google Chrome) and open the website:
mybridge.skaro.com.au

Click on the button 'I have a new bridge to setup'.



The image shows the AutomationBridge login and registration interface. On the left, there is a login section with a blue circular icon containing a white person silhouette. Below it are input fields for 'Email' and 'Password', followed by a blue 'Login' button. A link for 'Reset Password' is at the bottom right of this section. On the right, there is a registration section highlighted with a red border. It features a blue icon of a person with a plus sign. Below it is a blue button labeled 'I have a new bridge to set up'. A link for 'Show me the setup guides' is at the bottom right of this section. The top of the page has the 'automationbridge' logo.

Your Ness M1 AutomationBridge will automatically be found.



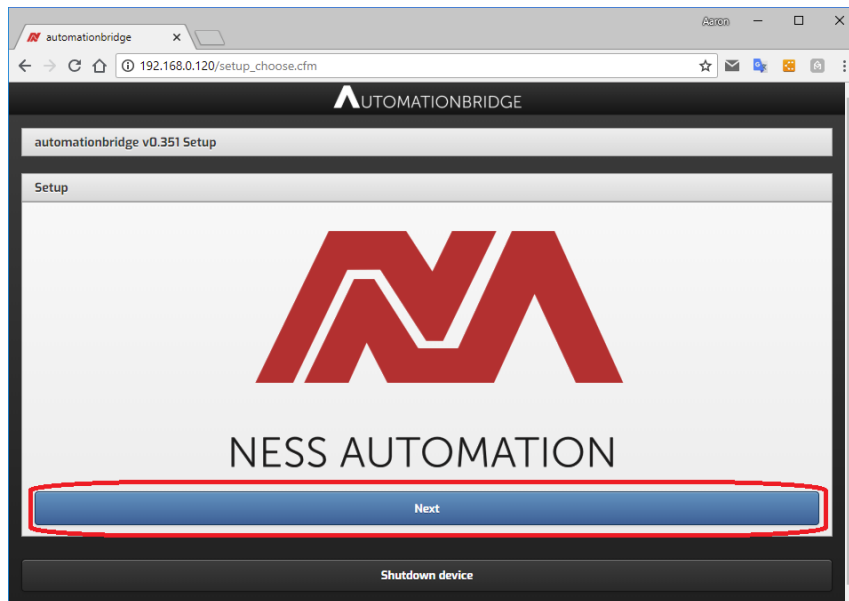
The image shows the AutomationBridge registration screen in a web browser. The browser's address bar shows the URL 'https://mybridge.skaro.com.au/?module=register'. The page has the 'automationbridge' logo at the top. Below the logo, there is a section titled 'YOUR BRIDGE DETAILS' with the instruction 'An automationbridge was found on your local network. Please verify the details below against the label on your device.' This section contains three input fields: 'Serial Number' (000000006b4ab093), 'MAC Address' (b8:27:eb:4a:b0:93), and 'Allocated IP Address' (192.168.0.120). Below this is a section titled 'YOUR DETAILS' with four input fields: 'Name', 'Email Address', 'Password', and 'Confirm Password'. At the bottom of the form is a blue button labeled 'Register Device'. The footer of the page says '© Skaro Technology 2018'.

Enter in the end users details.

Each AutomationBridge will need to be setup with different email addresses, as it will be used when using the smart speakers.

Once you enter in your details into the AutomationBridge, an email will then be sent to the email you entered into the AutomationBridge. You then need to click on the verify link in the email to activate your AutomationBridge. This will then ask you to enter in your password you used to setup the AutomationBridge.

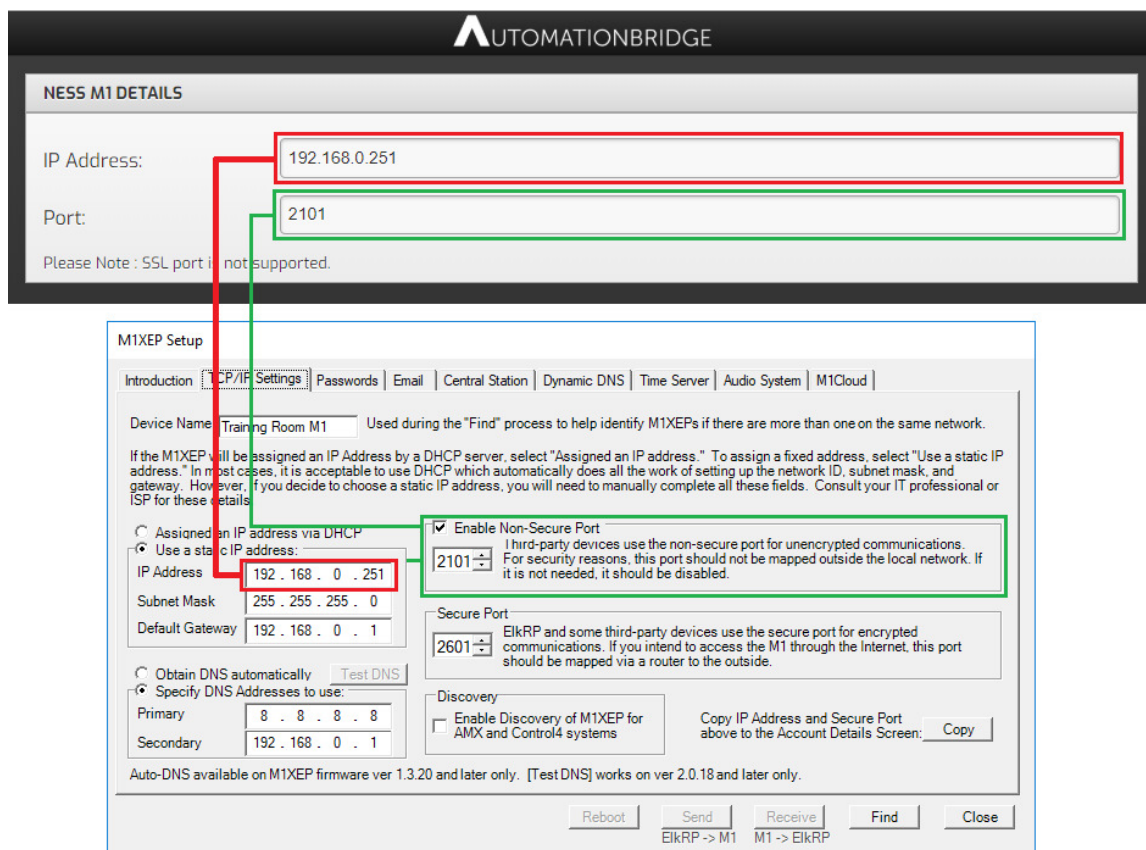
Click on the 'Next' button to setup the AutomationBridge.



You now need to enter in your M1's IP address.

The Ness M1 AutomationBridge only works on the non-secure port on the M1XEP. This is still secure as it's only being used on the customer's local network and not over the internet.

Make sure the M1XEP has a STATIC IP Address and not a DHCP IP address.



Select the customer's location. This is used for the event log in the AutomationBridge in case there is any issues we need to troubleshoot.

LOCALE

Timezone:

Australia/Melbourne

Depending on what device you are going to use will depend on what setting you need to enable.

ENABLED SERVICES

Amazon Alexa

Off

Google Assistant

Off

iOS HomeKit

Off

Amazon Alexa

Yes

Amazon Alexa

Such as Amazon Echo devices.




Google Assistant

Yes

Google Assistant

Such as Google Home or Android Devices inc Android Watches.



iOS HomeKit

Yes

iOS HomeKit

Such as Apple HomePod or iOS devices inc Apple Watch.



Click on the Next button to save settings to the AutomationBridge.

Google Assistant

Off

iOS HomeKit

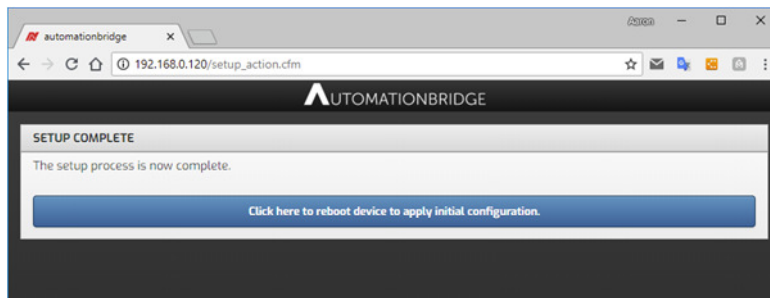
Off

Next

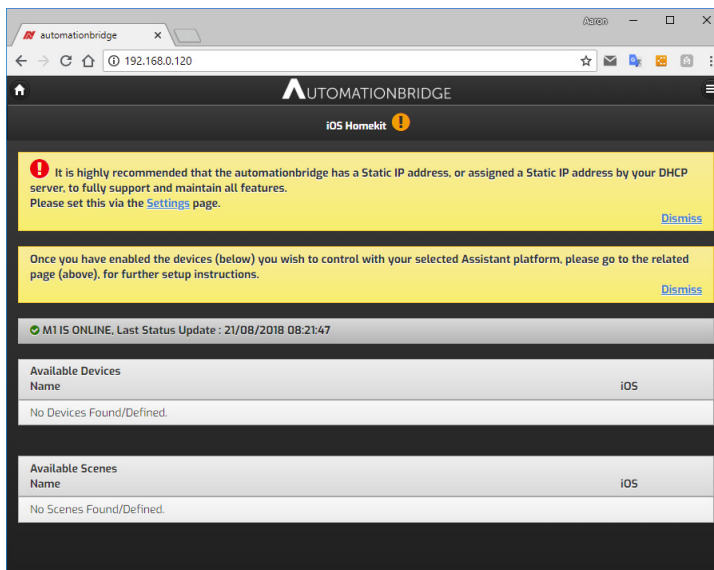
Shutdown device

Click on 'Click here to reboot device to apply initial configuration'

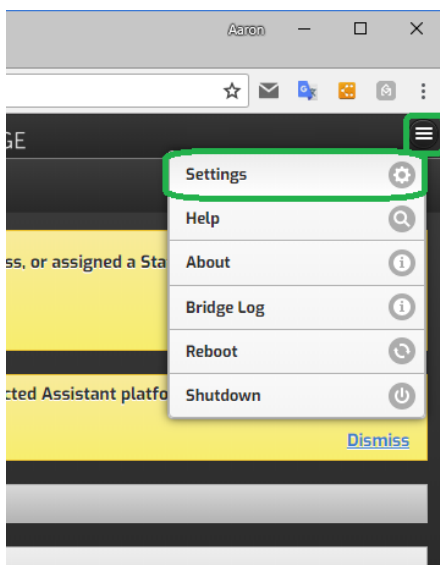
This will reboot your AutomationBridge and enable the services.



Once the AutomationBridge has rebooted, it will display the main user interface.

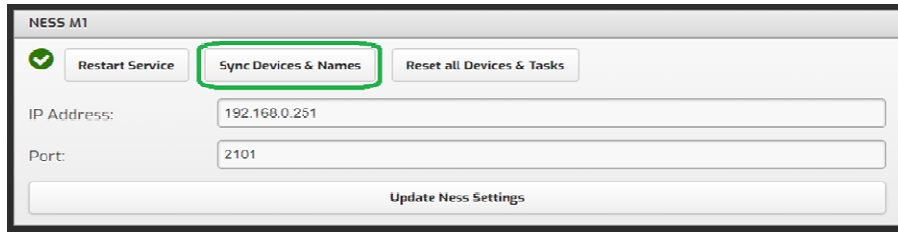


Click on the menu icon up the top right, and choose 'Settings'.



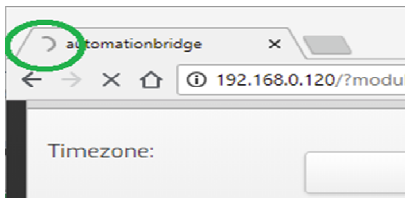
Find the Ness M1 section and click on 'Sync Devices & Names'.

This will synchronize the names from the M1 to the AutomationBridge.

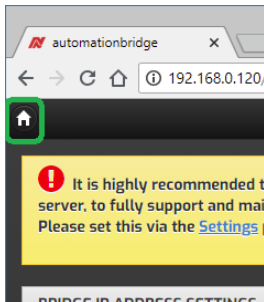


Wait for the status icon to stop spinning (if you are using Google Chrome). This way you will know it has finished synchronizing.

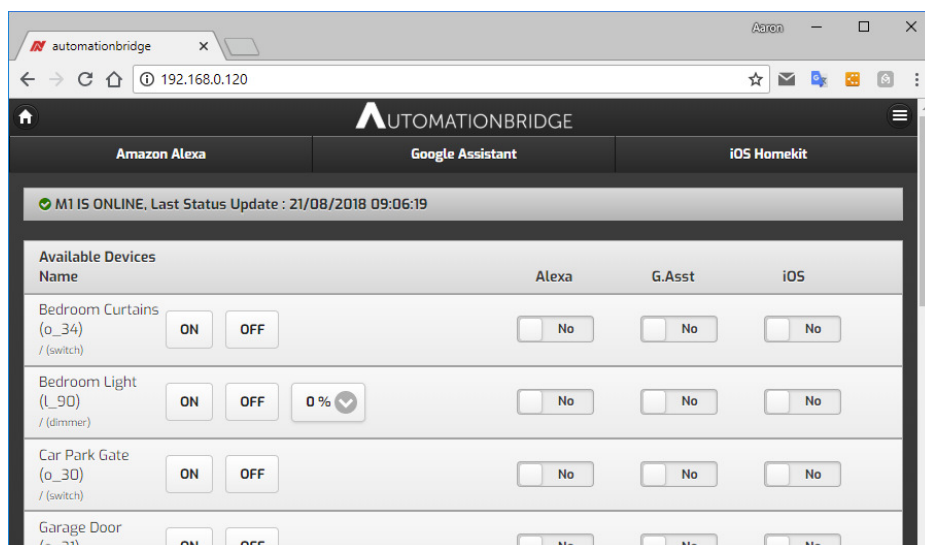
This will take approx 2-3 minutes to complete.



Once the synchronize is done, click on the 'House' icon.



All the Tasks, Lights & outputs should then display in the webpage.



1.3 Enabling Devices

Before you can use your voice to control the M1, you need to select the Tasks, outputs & lights you want to control.

Simply enable (turn on) the toggle button for the device you want to control.

Depending on the smart speaker you are using will depend on what you are planning on using.

Simply turn the device On (so it shows 'Yes') which means it will work with that smart speaker.

Available Devices				Alexa	G.Asst	iOS
Name						
BBQ Area (L_102) / (dimmer)	ON	OFF	0 %	No	No	No
Bedroom Curtains (o_034) / (switch)	ON	OFF		Yes	Yes	Yes

In the example above, the BBQ Area is a M1 Light, and we are not going to allow that device to be controlled by our voice.

However, the Bedroom Curtains is an output, and that is going to work with all smart speakers since it has been enabled for that M1 output.

You don't have to have all smart speakers enabled for a device.

For Example, in the below the Google Assistant has now been enabled for the BBQ Area. The Google Assistant (Such as Google Home) will be the only device that will allow you to control the BBQ Area with your voice. Alaxa and iOS (Siri) won't be allowed to control the BBQ Area with your voice.

Available Devices				Alexa	G.Asst	iOS
Name						
BBQ Area (L_102) / (dimmer)	ON	OFF	0 %	No	Yes	No
Bedroom Curtains (o_034) / (switch)	ON	OFF		Yes	Yes	Yes

It is highly recommend not to Arm or Disarm the system with your voice. Otherwise thefts will be able to disarm the system without having to enter in a pin code. However if really required, it can still be done by activating a Task on a M1.

A task can also be useful if you are wanting to turn on multiple lights or outputs, or even something else on the M1.

1.4 Pairing Devices to your Smart Speaker

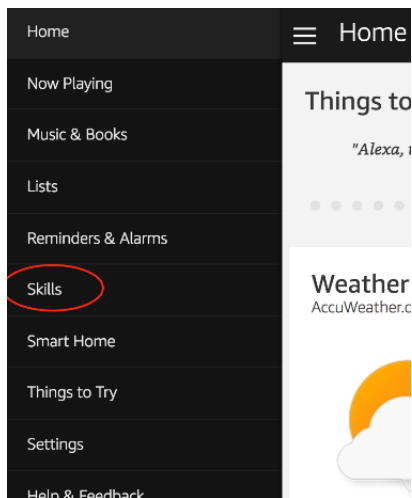
Once you have enabled the devices you want to control with your voice, you are now ready to pair the smart speaker to your AutomationBridge.

Note: It's important that you set your Ness M1 AutomationBridge to have a static IP address before pairing your Smart Speaker with the AutomationBridge.

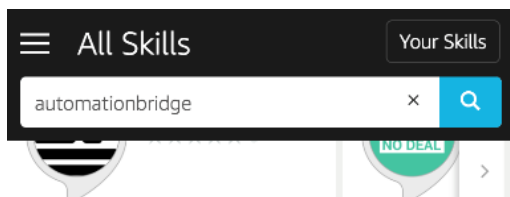
Amazon Echo (Alexa)

Open the Alexa app on your phone or tablet. If you don't have it already you can download it for free from the app store. Else you can open it via the Alexa website (alex.amazon.com).

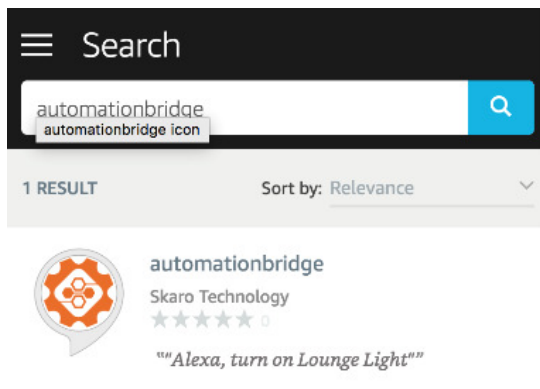
Open the side menu and click 'Skills'



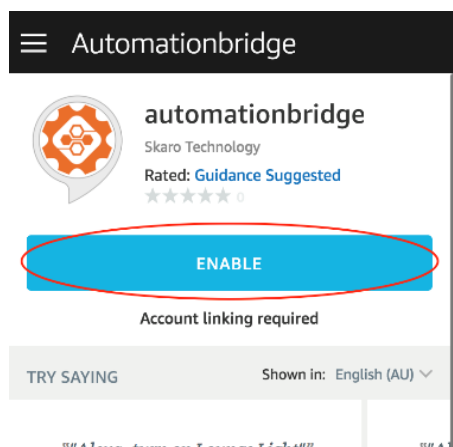
Search for 'automationbridge'



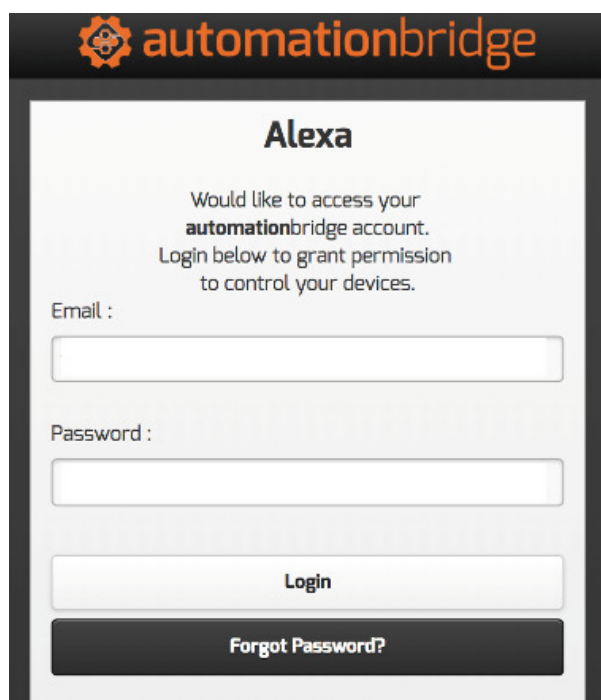
Select automationbridge from the search results.



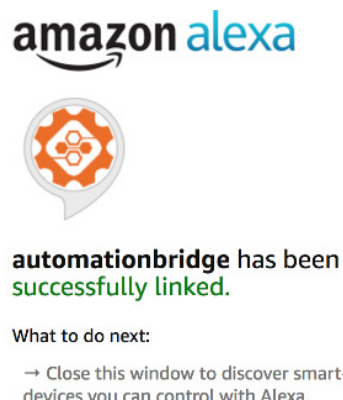
Press the 'Enable' button to start the process of linking your account.



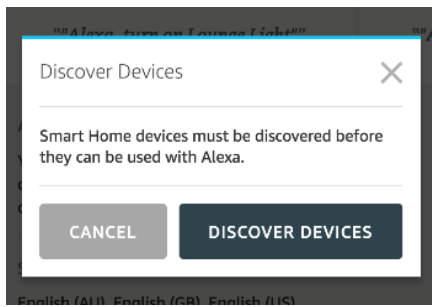
Enter your email address and password. This is the same email address and password you used to setup the AutomationBridge. Then press the login button.



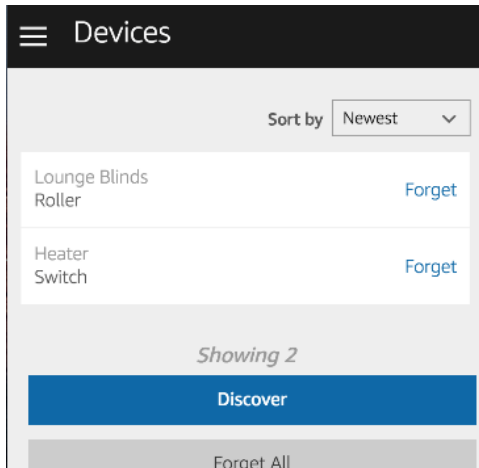
You will then be presented with a new window, that will confirm that the linking was successful.



Now you can perform the discovery of the devices you have enabled in your bridge. This normally takes approx 20 seconds.



Your devices that you enabled from the AutomationBridge (for Alexa) will display.

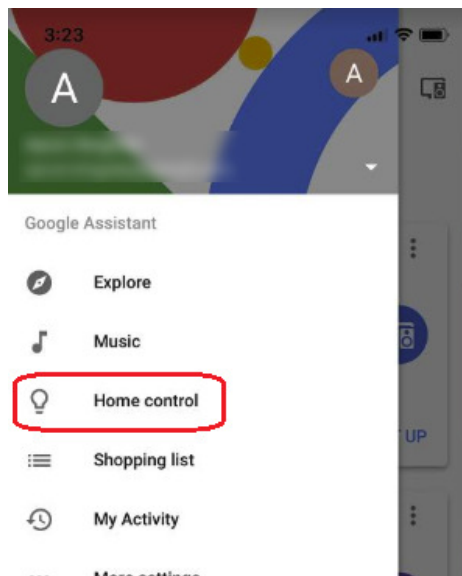


If you enable or disable devices in the Ness M1 AutomationBridge at a later time, then you can just return to the Alexa app (or Alexa web page) and navigate to 'Smart Home' > 'Devices' > press the button 'Forget all' and then 'Discover'.

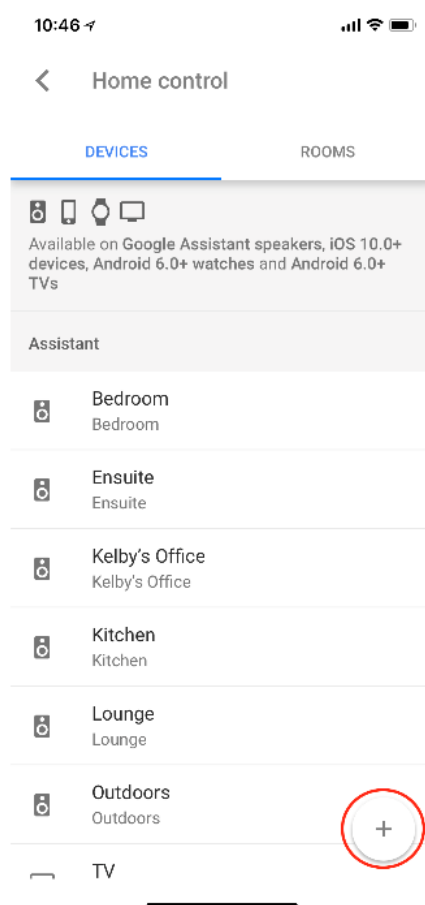
Google Assistant (Google Home)

Open the Google Home app on your phone or tablet. If you don't have it already you can download it from the app store.

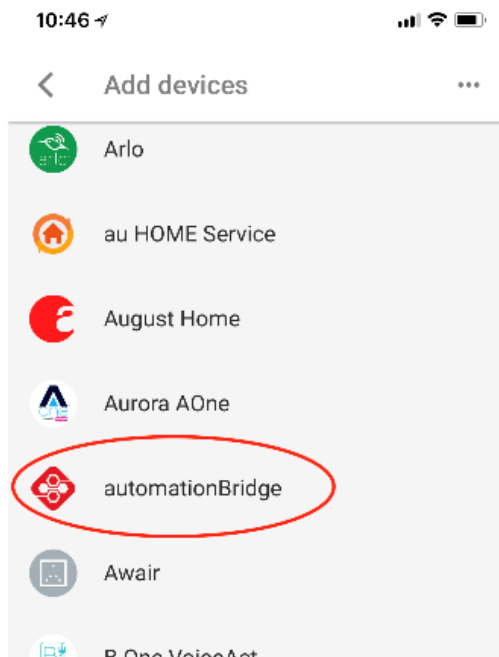
Open the side menu, and tap on 'Home Control'.



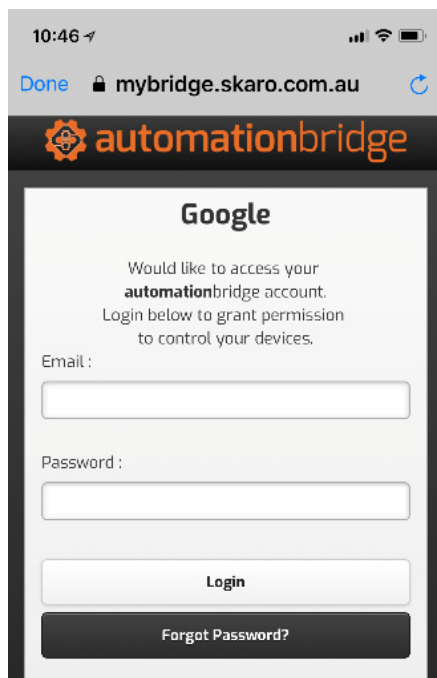
Tap on the Plus icon at the bottom right the screen.



Find and select 'automationbridge' from the list.



Enter your email address and password. This is the same email address and password you used to setup the AutomationBridge. Then press the login button.



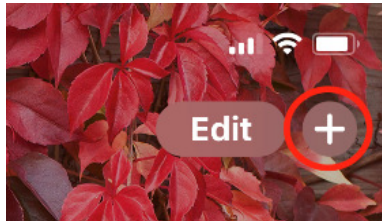
Your devices that you enabled from the AutomationBridge (for Google Assistant) will display.

iOS (HomPod / Siri)

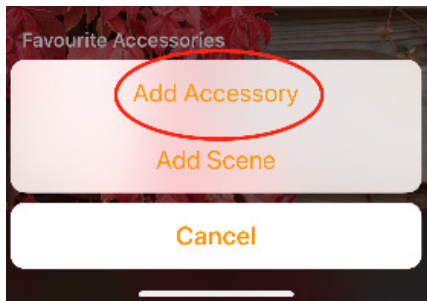
When using Siri (iOS devices) and you modify a device in the Ness M1 AutomationBridge, you need to make sure you re-start the service.

Open the 'Home' app on your iOS device.

Press the plus button at the top right of the screen.



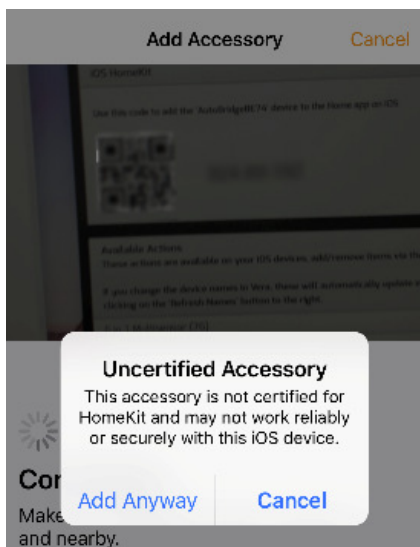
Choose Add Accessory from the menu.



Open the 'iOS' screen in the Ness M1 AutomationBridge in the web browser on a computer.

Scan the QR code that is displayed on the screen with the app on your iOS device.

A warning message may appear. Click on 'Add Anyway' when prompted to do so.

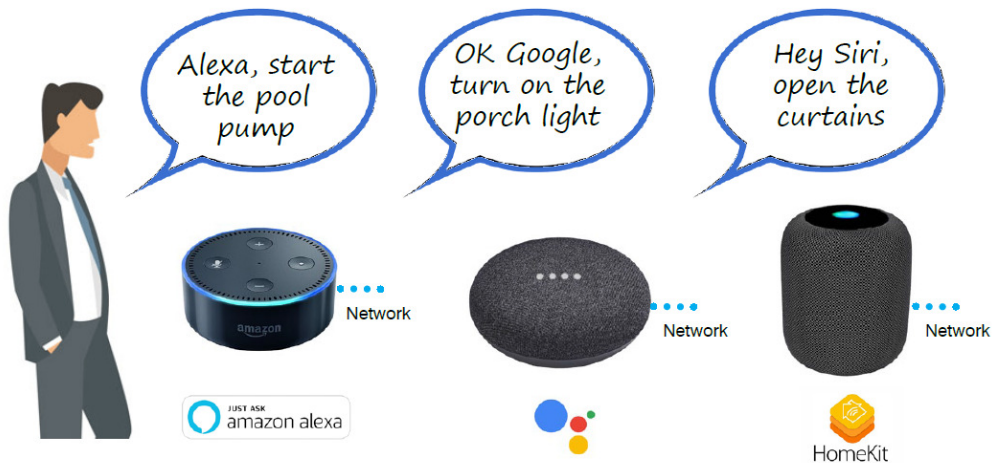


Continue through the setup process by pressing the next button up the top right to assign devices to rooms as required.

Once this has been done, you will find your devices in the home app. This can now be controlled by your voice using Siri based devices.

1.5 Voice Control Commands

Once your M1 AutomationBridge has been setup and paired with your Smart Speakers, you are then ready to control things with your voice.



Amazon Echo (Alexa)

Lights

Command	Example
Alexa, turn [on/off] [device name]	Alexa, turn ON Bedroom light
Alexa, turn [device name] [on/off]	Alexa, Bedroom light OFF
Alexa, Dim [device name] to [percent]	Alexa, Dim Bedroom light to 40%

Outputs

Command	Example
Alexa, turn [on/off] [device name]	Alexa, turn ON Bedroom Curtains
Alexa, turn [device name] [on/off]	Alexa, Bedroom Curtains OFF

Tasks

Command	Example
Alexa, activate [device name]	Alexa, activate Theatre scene

Google Assistant (Google Home)

Lights

Command	Example
Hey Google, turn [on/off] [device name]	Hey Google, turn ON Bedroom light
Hey Google, turn [device name] [on/off]	Hey Google, Bedroom light OFF
Hey Google, Dim [device name] to [percent]	Hey Google, Dim Bedroom light to 40%
Hey Google, Is the [device name] [on/off]	Hey Google, Is the Bedroom light on?

Outputs

Command	Example
Hey Google, turn [on/off] [device name]	Hey Google, turn ON Bedroom Curtains
Hey Google, turn [device name] [on/off]	Hey Google, Bedroom Curtains OFF
Hey Google, [open/close] the [device name]	Hey Google, Open the bedroom curtains

Tasks

Command	Example
Hey Google, activate [device name]	Hey Google, activate Theatre scene

iOS (HomePod / Siri)

Lights

Command	Example
Siri, turn [on/off] [device name]	Siri, turn ON Bedroom light
Siri, turn [device name] [on/off]	Siri, Bedroom light OFF
Siri, Dim [device name] to [percent]	Siri, Dim Bedroom light to 40%
Siri, Is the [device name] [on/off]	Siri, Is the Bedroom light on?

Outputs

Command	Example
Siri, turn [on/off] [device name]	Siri, turn ON Bedroom Curtains
Siri, turn [device name] [on/off]	Siri, Bedroom Curtains OFF
Siri, [open/close] the [device name]	Siri, Open the bedroom curtains

Tasks

Command	Example
Siri, activate [device name]	Siri, activate Theatre scene
Siri, [device name]	Siri, Theatre scene

1.6 Tips & Best Practices

Names of devices are what you have entered into ElkRP. When using multiple devices ensure none have the same name, else it may have an issue working out which device you are wanting to control.

Make sure your Ness M1 AutomationBridge has a Static IP address, else it will stop working in a few days/weeks.

Additional Information:

Customer Service

Phone: 1300 551 991 (M-F 8:30am – 5:00pm)

Email: customerservice@ness.com.au

YouTube: www.youtube.com/nesscorporation